



***West Bottoms Reborn Vision Study Phase I***

# INSIDE

## **Cachimo**

BIO  
Statement  
WBR Intended Role

## **Observations**

I . Co- Habitants and Cultural Relativism  
II. Characters , Players, and Archetypal Identities

## **Reborn Vision Study : I**

Narratives : Relationship to Planet and Other

Introduction  
Planet  
Other  
Dichotomy and Digestion

## **Social Investigation**

- Lectures, Workshops, Cultural Investigation, Mapmaking
- Walking Tours
- Calendar and Budget
- Website

## **Technology**

- Drone Footage
- 360 + Google St. View
- VR
- After Affects, 3d Imaging, Animation

## **Outcomes**

Knowledge of the Hand  
Interconnectivity and the Ecosphere

## **Vision Study for Central Industrial District**

Concept : Water  
Identity, Form, and Function  
Images



## BIO

I am a person who feels deeply about the beauty and mystery of life. I am motivated by difficult existential questions, and have a large appetite for the process of learning and understanding. I am a person who strives to practice compassion and believes in the power of transformation. I have an innate connection to the earth, planetary body and literal soil. I come from generations of peoples who have practiced a deep care and respect for the land. This sensibility and nature is innate to my character and creative identity. I was born to a Mexican Man and American Woman, my cultural identity is a part of my story - both cultural sensibilities reside in my being and artistic practices unfolding new traditions and inherited knowledge. I do my best to listen to wisdoms that have been passed on and let their accumulated presence guide me through life. I am devoted to my journey through the unknown. As I develop my voice, I will continue to share. As I continue to live, I will continue to create.

I know no other, wish infinite.



## STATEMENT

I received my BFA in 2010 from the Kansas City Art Institute in Interdisciplinary Art and Creative Writing with a certification in Community Arts and Service Learning. I am currently working as an independent artist in Kansas City and have exhibited my works and ideas in numerous places all over the world. My pieces are mainly generated by my interest in science, art, philosophy, color theory, quantum mechanics, synesthesia, chaos theory .....basically everything. I maintain a studio practice of experimentation and open-mindedness. In applying the sensibilities of science to art, I attempt to create a visual language that transforms my emotional-intuitive experiences into innovative installations and performances.





## INTENDED ROLE

As a team member of the West Bottoms Reborn Project my role is to act as a design consultant in the realm of architecture via arts, culture, and technology. As a part of my work I will be hosting a series of activities, featuring but not excluded to, walking tours, lectures, cultural investigations, workshops, social platforms, and map making exercises. These activities will work to reveal the interconnectivity of narrative structure, world view, and identity present in the West Bottoms. The collaborative cross disciplinary research will challenge the conceptual framework of “urban fabric “ and will work to explore and analyze spacial organization as a stage to human activity.

# OBSERVATIONS

From Feb 2017- Aug 2017 I did three observational studies of the West Bottoms Area

Observation I



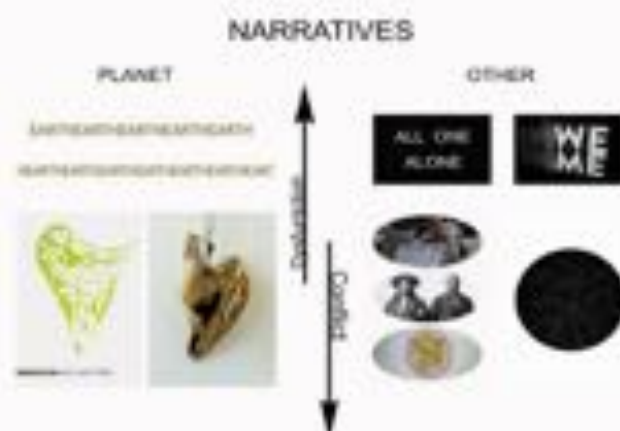
Co- Habitation and  
Cultural Relativism

Observation II



Characters, Players, and  
Archetypal Identities

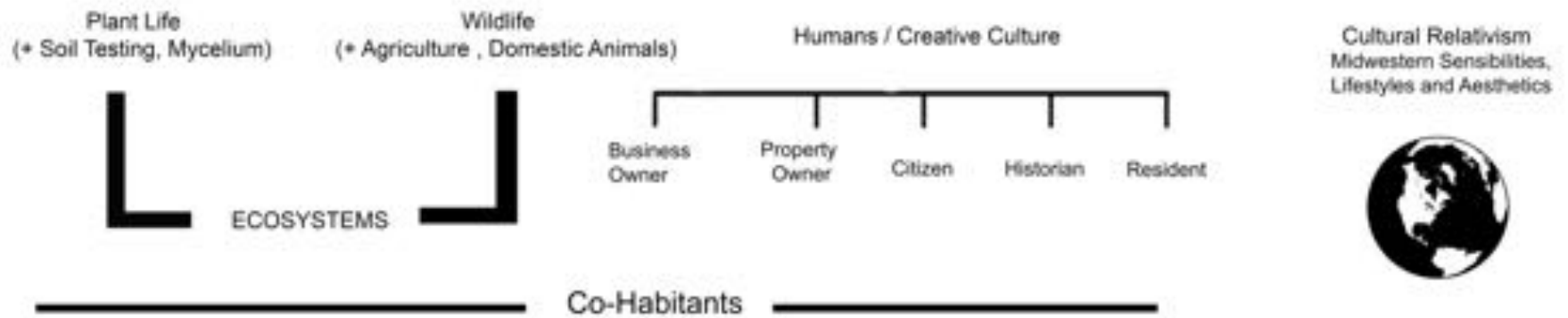
Observation III



Narratives : Relationship  
to Planet and Other

## CO-HABITATION & CULTURAL RELATIVISM

Map I .

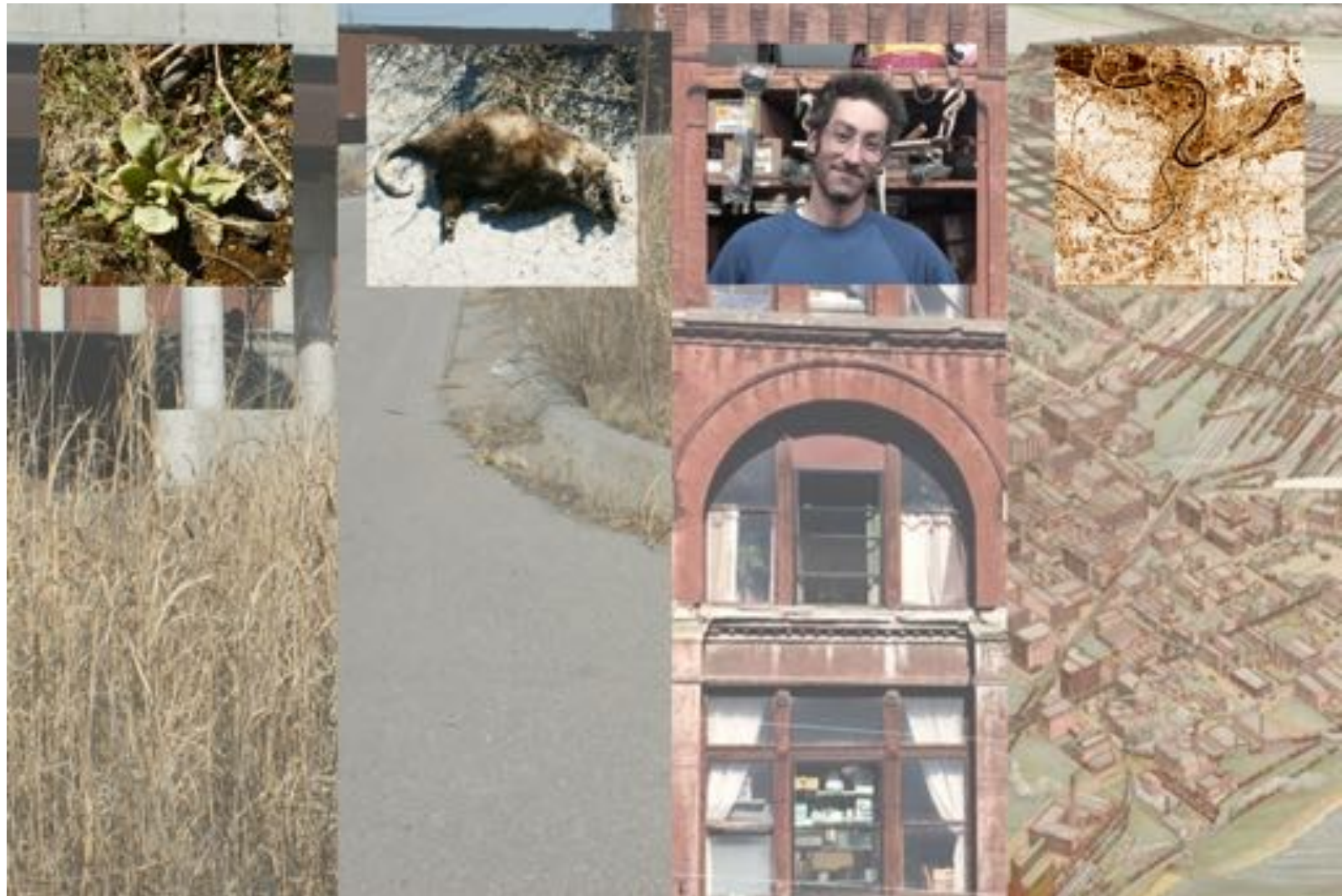


Map II .





Map III .





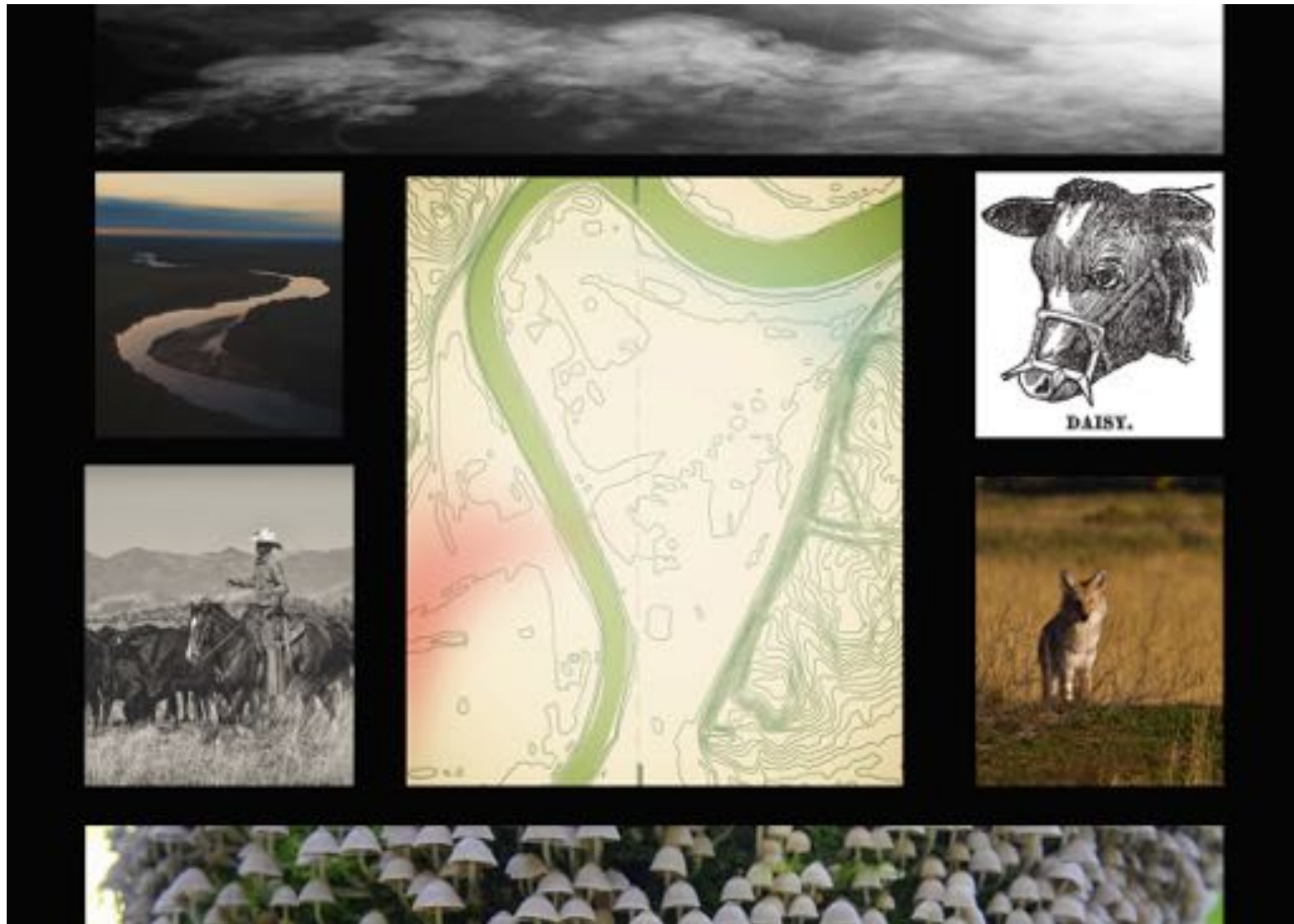
## Overview

My first take on the on the West Bottoms Reborn Site was to evaluate the ecosphere, that being , all that reside with in the working ecosystem of the West Bottoms. This dichotomy begins with the earth as a foundation for evaluation. From there I made observations concerning soil, plant life, wildlife, and human life. All of these co-habitants seemed to have interconnected relationships, that informed and affected each other. This is no surprise, for this is simply the interconnected relationships that all forms of life experience. Even though this is known, I am still compelled to deepen my understanding of the layers that reside with in this vast place.

I had first been introduced to the West Bottoms as a young artist in 2005. The West Bottoms was a flood of adventure destinations, that ranged from abandoned train bridges, riverfront fires, trash boat regattas, pirated venue spaces, DIY initiatives, and urban exploring. It was a playground for a wide variety of creatives, artists, explorers, and adventurers. The empty stockyards was a jungle gym of haunted houses, performance venues, galleries, and speakeasies.

The West Bottoms in it's presence holds the preservation of the histories of both Kansas City, Missouri and Kansas City, Kansas. In it's vacancy you can hear the reminisce of it's past silently and slowly emerging . For me, the Bottoms is beyond the domains of just space and time, it is a place that is alive. It is not just an artifact or relic that embodies nostalgic stories of Americana or the Wild West, it is a stage set to both past and present. An intersecting gateway, where we get the opportunity to understand our lives, our communities, and our identity through the transformation of place.

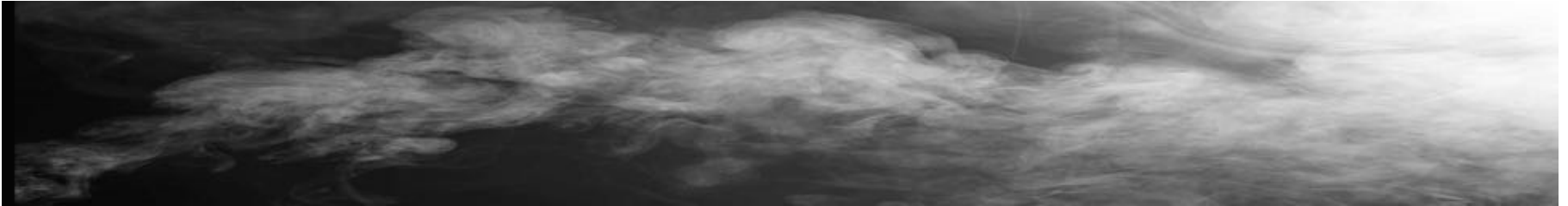
## CHARACTERS, PLAYERS, AND ARCHETYPAL IDENTITIES



## I. DEATH and/or NEAR DEATH EXPERIENCE

### THE GHOST

#### UNSEEN. UNHEARD. UNKNOWNABLE



The West Bottoms in itself is a ghost of Kansas City's past. An interesting quality of this place is that it acts as a artifact to specific histories of Kansas City. This is unique in the sense that it has been preserved due to flooding i.e. forces of nature. I find this unique because a lot of architecture in Kansas City has been torn down. American development seems to lend itself to immediacy - tear it down and build another one. When we travel to cities in other parts of the world we exist within a mix of modern and sometimes even ancient architecture. There is no doubt that there is a different sense of place and understanding of time when you live with in infrastructure that has stood for hundreds or even thousands of years -you can visual see the life of the past and present. For me, the lively hood of the West Bottoms acts as an eerie gateway to our local identity - it is a ghost, underneath the surface of time .....

America has a vast history of genocide, slavery, and servitude -the West Bottoms is in no way excluded from that. As an artist, I understand the world through the knowledge of the hand and recognize the power we have as a species to mold and manifest our ideals, dreams, and beliefs. It is most interesting to me the idea of a place being built from the hands of people its ideologies do not serve. When you create art or craft an object you put a part of yourself into the world. If we think about this in the context our entire American Architecture a large portion of our infrastructure carves out spaces that stand for ideals and practices that did not serve the populations that constructed them. I visualize the hands of freed slaves, natives, and immigrants laying the brick and mortar of the stockyards. I imagine the motivations for work - food, family, freedom - dreams of a greater future. The reasons for using their hands and building a future are different from the ideologies and practices that were designated through space, property, and ownership. Buildings may stand in the place of a world view and/or political ontology, but they were created by people who believed in sometime different. The work and knowledge of the hand is alive and embedded into the construction of our civilization....

One of the largest homeless camps of Kansas City resides on the east buff of the West Bottoms. I classify the homeless camp as a player in the identity of the ghost in the sense that the community has been dehumanized to the point that their lives have become invisible to the general public. A fair percentage of the residents residing with in this camp our veterans struggling with PTSD. This trauma is not just a ghost - it is haunting of hate, war, injustice, and all other human discontents alike .....

## II. LIFE

### REBIRTH

RENEW . REMEDIATE . REJUVINATE

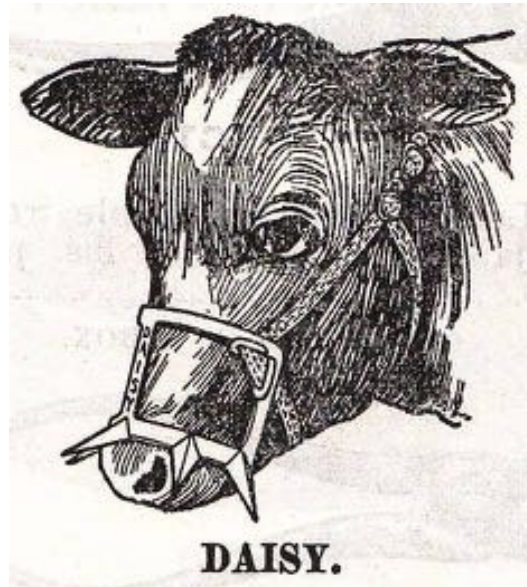


To live again, typically indicates that some sort of death has occurred. In recognizing the ghosts of the West Bottoms we might begin to understand the way to renew this place to its next lifecycle . The first step to this renewal is to accept the death and address where we see possibility for potential life. Since portions and populations of the West Bottoms have endured extreme traumas we might begin by looking at a spectrum of transformations through time.

Most of the West Bottoms is brown field. Brownfield land is an Anglo-American term used in urban planning to describe any land previously used for industrial or commercial purposes with known or suspected pollution including soil contamination due to hazardous waste. The West Bottoms brown field is due to the industrial district waste, city run-off water, and current sewage overflow. Through bioremediation it is possible to give this land, soil , and water shed a new life. The Green Infrastructure Project will attempt to manage storm water run-off and soil contamination through a series of bioswales and cisterns. I believe it is possible to take this remediation one step further and incorporate fungi or mycoremediation into the vision for renewal of the West Bottoms.

If we open up a dialog about American histories, homelessness, and questionable agricultural practices we might have an opportunity to better understand this place and ourselves. To rejuvenate a sense of life with in this place we must look at all the of the interconnected factors of the ecosystems. In taking into account human activity we can better envision what types of activity are suited for the space, and hopefully design something that will bring life to the land and its peoples.





## **COW-GALS**

Above is the image of daisy, the cow, wearing a spiked muzzle. This muzzle was used to cause pain for a mother and a baby calf when they attempted to touch. It would jab and poke from the inside and outside. This technique was used to keep the mother and her baby apart, and would have been used frequently in an environment like the stockyards. COW-GALS is a image that symbolizes the cruelty and uncouth practices of dominating the nurturing qualities of feminine and abusing nature.



## **AMERICANA**

The concept of Americana is often romanticized based on false narratives - one such as the cowboy. Over two thirds of actual cowboys, whom drove cattle up and down the entire midwest were people of color. Cowboys in America are mostly depicted as white Anglo men and are rarely depicted as peoples of other cultural heritage. This identity which belonged to a diverse group has been intentionally used, marketed, and branded for supremacist ideals.



## THE RIVER

No archetypal identity has lived in this place longer than the river. She is the oldest and longest living gateway into the place that is the West Bottoms. Water is LIFE, and we depend on the MO as a source of life everyday. This maternal relationship is one of great importance, for if it were to be broken or if the river were to be poisoned it could result in mass death. The River is not just a pretty scene the West Bottoms, but she is the life source that makes our city possible. As our world changes, and we redevelop infrastructure based on needs and sustainability, water **will** take center stage.



## COYOTE

According to Native American stories, Coyote or Coyote Medicine can be defined as the trickster teacher. Coyote teaches through folly and misadventure and asks people to wake from their slumbers. Coyote is a mirror that reveals the shadow self woven through riddles and madness. Most people see Coyote as silly or disrespectful, but Coyote is neither. Coyote has one objective, to reveal an honest look at one's actions. The Coyotes of the West Bottoms take all shapes and forms, and are often literal coyotes. Artists, punks, drag racers, LGBTQ communities, urban explorers, and many more in habit this space, like Coyote, these social groups walk various boundaries and engage in social commentaries that question our current cultural structures.



## THE HEARTLAND

The image to the left is a topographical map of the West Bottoms. After looking at the aerial views of the West Bottoms area many concurred that its general shape and form resembled that of a human heart.

The Heartland is defined as the central part of the US - the Midwest, the central or most important part of a country, area, or field of activity.

Heartland refers to a tangible region, but is also a cultural term describing many ideas and values, such as hard work, rustic small town communities, rural heritage, simplicity and honesty. The states of Wyoming, North Dakota, South Dakota, Nebraska, Iowa, Missouri, Kansas, Colorado, Oklahoma, and Texas are typically associated with "The Heartland" but this varies.

There is no consensus as to "where" America's heartland is physically located. However, the American Midwest is the most commonly cited area as being the nation's heartland.

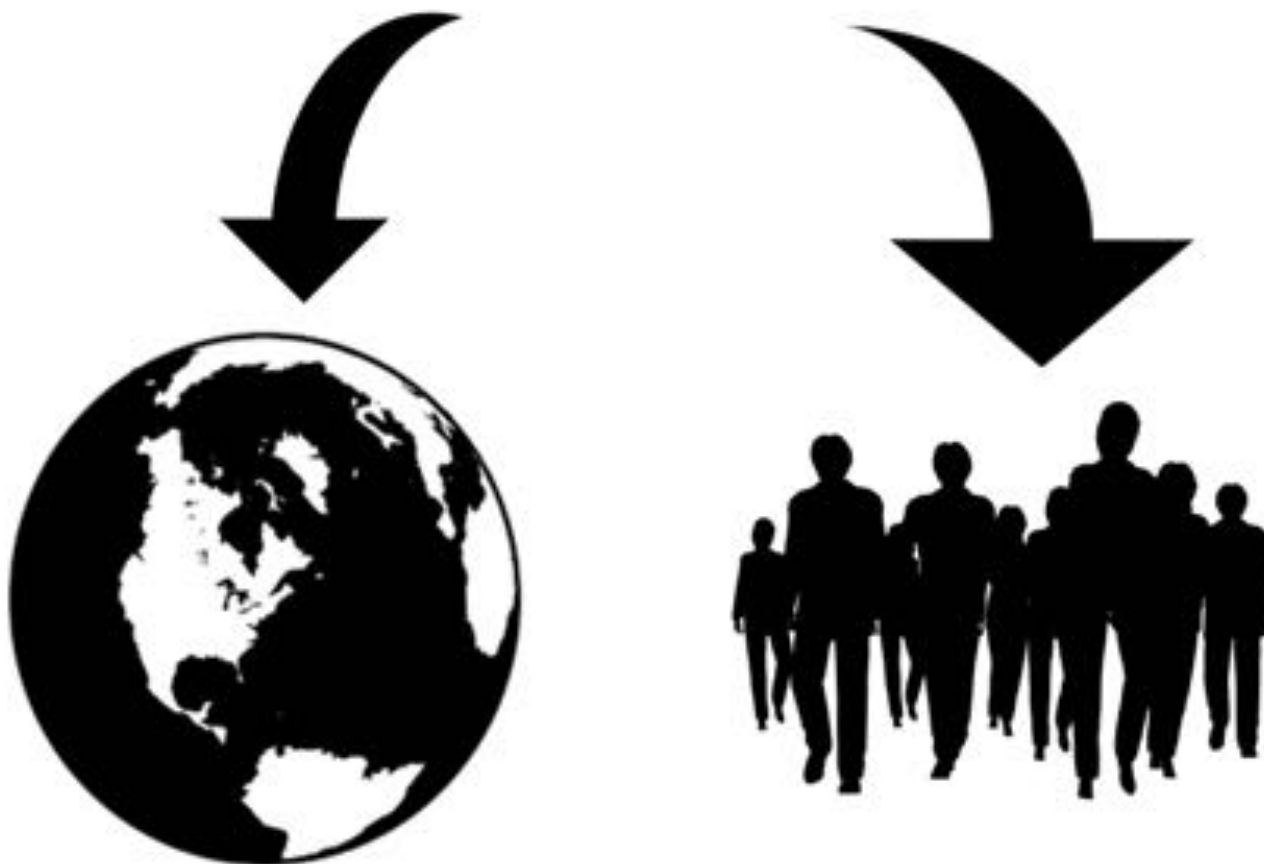
# **West Bottoms Reborn Vision Study I**

## **Narratives : Relationship to Planet and Other**

Narrative is existential, it is the way that we understand beginning and end, life and death - circumstances of human condition. Stories embody a frame of reference outside human as an observer of place, characters, and movement. This perspective can be complex and beautiful, intricate and wild, and simple and accessible - a format for all to understand and share. It is a journey that reveals to us layers of life displaying phenomenal transformations and choreographed happenings through time. Narration is an ominous summation of identity, character, perspective, theme, and plot.



RELATIONSHIP



# NARRATIVES

PLANET

OTHER

EARTHEARTHEARTHEARTHEARTH

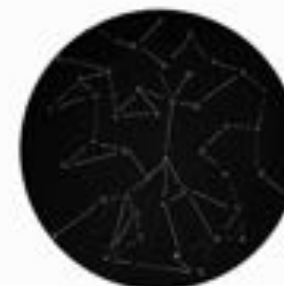
HEARTHEARTHEARTHEARTHEARTHEARTHEART



Dysfunction

Conflict

ALL ONE  
ALONE



# **NARRATIVE : RELATIONSHIP TO PLANET AND OTHER**

## **PLANET**

Our current relationship to the planet is in distress due to increase in pollutants, human activity, and climate change. The earth is the foundation of life, the source form which we derive. If we loose this understanding or continue to abuse the planet we will experience repercussions.

## **OTHER**

Our current social political conflicts threatens human lives and our constitution. We must address ontologies of race, cultural histories, illogical reasonings, and false narratives. Current counterfactual values challenge the social structures of freedom, liberty, and morality.

## **Relevance : Relationship and Relativism**

It seems to me that these two topics are a result of current lifestyle decisions and self-serving perspectives and practices. If we consider self-serving perspectives in terms of survival it doesn't quite work out. In understanding the functionality and working dynamics of tribes, communities, and social groups - it is understood that it is necessary to make personal sacrifices in order to insure the survival of all peoples i.e. humanity. This sensibility is superior in intelligence in the sense that it is understood that there are limitations to individualism as well as physical laws in the natural world . As our species grows we will face this challenge head on, as we will be forced to relate to the entire world as large living network.

LINGUISTIC CONCEPT FORM - PLANET

EARTHEARTHEARTHEARTHEARTH

HEARTHEARTHEARTHEARTHEARTHEARTHEARTHEART

THEART  
EARTHEART



## LINGUISTIC CONCEPT FORM - PLANET

The linguistic concept form for planet is EARTH or HEART. Each word sort of bleeds into the other, so if you repeat EARTHEARTHEARTH or HEARTHEARTHEART and bend it into the form of a circle to create a continuum of each. In the same sense, if you create a repetition of each word in a linear strip and connect the ends you complete the circuit. EARTH and HEART have a innate linguistic relationship that represents a new conceptual form in 4D space.

## FORM AND FUNCTION - PLANET



## KCDC MAP

The map above was made by the Kansas City Design students in 2017. After many hours of making maps and staring at the same form that is the West Bottoms we all confirmed the image most resembles the shape of a heart. In a tantrum with the idea is that the river was essentially the main artery. Even T-shirts were made “ I heart the West Bottoms” in which the heart was a topographical map of the Bottoms.

Generally, I like the concept that the earth and land embody the symbolism of the Heart or even the Heartland. Along with iconic midwestern identity, such as at the heartland, some Kansas City brands include a tag line “Heart of the Nation”. This coined verse is included in the symbol of the water department and the symbol that is used to represent the “City of Fountains” i.e. Kansas City.

Example page 51

## TURTLE ISLAND

The image above is a piece I made in 2012, while working for the Missouri Department of Conservation. Our current pond was being rebuilt and drained. Unfortunately, one of the red eared slider turtles didn't make it out and was accidentally run over by a bulldozer. The mother turtle had been crushed along with about half of her eggs. I took the body, and buried the remaining eggs in a nearby field. I began to rip the body apart and clean the shell, preserving the pieces that she had been shattered into. I laid them out to dry and made the remaining exoskeleton into pieces of jewelry. I had made earrings and bags, wore them and wore through them. Over the years, one piece survived, the piece shaped as a heart, identical to the shape and boundaries that is the West Bottoms.

I find this form and story to be incredibly ironic in so many ways. The name Turtle Island is used by many Native tribes, Native rights activists, and environmental activists - referring to all of North America.

Mostly what speaks to me is the shell, the heart, a shape identical to the land I must address.

LINGUISTIC CONCEPT FORM - OTHER



[CLICK FOR VIDEO](#)



## LINGUISTIC CONCEPT FORM -OTHER

The linguistic concept form for Other is formulaic and reflective. The concept map ME and WE reflect each other in form and function. Mirroring the inverse shape of each other as well as qualitative meaning, singular and plural. ALL ONE breaks down in formula, in the sense that it folds into itself, or is reduced into new meaning - being ALONE. Also opposite in form and function, deducing a plural into a singular.

## SPACE AND TIME - OTHER



## LAYERS IN TIME - TRUAMA

Each photo represents a layer in time, in the space and time that is the West Bottoms.

The bottom image is that of a female cow. This image of daisy, the cow, wearing a spiked muzzle. This muzzle was used to cause pain for a mother and a baby calf when they attempted to touch. It would jab and poke from both the inside and out. This technique was used to keep the mother and her baby apart, and would have been used frequently in an environment like the stockyards. The image represents a layer in time that reflects the dominating and abusive practices used to control nature.

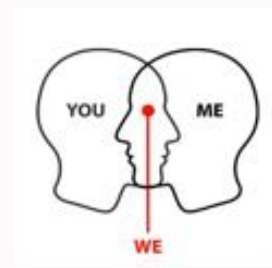
The middle image is a photo of a native man and black man. It acts as a reminder to the layer of time in which people of color were abused, displaced, enslaved, and murdered. There is a vast history of people of color in this place, yet we don't see it. The West Bottoms is mostly celebrated through iconic imagery of cattle and the stockyards, vacant of any remnants of the other cultural heritages that inhabited the space.

The top image is a homeless veteran. The largest homeless camp in Kansas City sits on the edge of the West Bottoms and has been present for 10-12 years. The camp varies in size from 70-120 people. It has been raided at least three times -forcing homeless populations, including veterans, from their camps and community.

## INTERCONNECTIVITY

The image above, "Othership", is a drawing from my sketch book in 2012. *Othership* is about the reflective or mirroring relationships from being to being. From macro to micro we all live in relation to each other. This image represents the interconnectivity of the Ecosphere. From bacterial communities to human activity, it is our condition that all forms of life are interconnected. If we choose to contemplate our current political, social, and planetary conflicts we must examine these intricacies. If we want to understand what our opportunities are for change, we must address where we see problems and begin to attempt alternatives that provide our living systems with possibilities for sustainability.

## DICHOTOMY AND DIGESTION



LISTEN



### The Landfill

Above is a photo of trash in the West Bottoms. Like much of the planet this place has become a dumping ground. And trash has become as much as a living entity as the wildlife. It is interesting to me the process of immediacy and disposability in America. Even with recycled materials our constant material excess threatens our planet. As we access sustainability we also need to take into account our lifestyles, habits, behaviors, and actions that contribute to the mass waste. We can have thousands of recyclable spoons floating in the oceans, which is better than thousands of plastic spoons floating in the oceans ..... BUT it doesn't get rid of the fact that we have thousands of spoons floating in the ocean. Along with alternative materials we must think of alternatives systems to aid in resolving the problems of excess waste.



### The Emotional Landfill

Like that of the actual landfill, there is an emotional landfill in America. Current American political structures support marginalizing minority populations. This world view acts much like that of the landfill, in which discontents are scapegoated or displaced on to others. These counterfactual value systems potentially threaten our world as much as the actual landfill, if not more. The life style of consumerism has bred it's way into the realms of the mind and spirit - to a place that dismisses logic, dehumanizes others, and makes specific populations disposable based on a political ontology of race and class.





## WASTE

The West Bottoms is a bit of a wasteland, currently occupied by sewage overflow, toxic chemicals, and trash. This place has serious digestive issues as a result of dumping and waste displacement. This is quite unfortunate considering our neighboring water supply, the MO river.

Our current green infrastructure plan for the West Bottoms seeks to control sewage and water overflow by storm sewer systems improvements, landscape features, and water ponds. Techniques will be studied as a way to improve sewer overflows to help protect our communities environment.



## WATER

In reality the environment we seek to protect is a large bodied interconnected organism with flowing veins that keep everything alive. By doing our part and being open and supportive to communities that are invested in the health of the river we can better understand the possibilities of a healthy future.

It is an important moment in time that we talk about water quality and pollution. Due to climate change and human activity our water sheds could change drastically. By engaging topics of water and water systems we can gain knowledge and understandings that provide valuable resources and information for keeping our water supply safe and adequate for drinking.



## REMEDIATION

Bioremediation is a waste management technique that involves the use of organisms to neutralize pollutants from a contaminated site. Bioremediation is a treatment that uses naturally occurring organisms to break down hazardous substances into less toxic or non-toxic substances. The term soil refers to a living material composed of minerals, organisms, and the gasses and water between. Remediation through the use of plants, fungi, and multiple forms of diverse organisms is the best alternative to making progressive steps to new more effective ways of remediating land and soil. Entire living systems in nature should be considered in this process.



## LISTEN

I think it is vital that if we wish to rejuvenate this region of land, that we not only incorporate and engage all communities, but that we listen and take into account other world views, perspectives, and agencies. Outside communities include, but are not excluded to, Native and Indigenous populations, Kansas City, KS communities and population, homeless populations, veteran populations, women and children.

# **SOCIAL INVESTIGATION**

**The premise behind the social investigation is to have a dialog with community members that reside with in the KC Metro Area and to engage communities that once lived in the area and have been displaced. The walking tours, lectures, and workshops give agency to artists and artist teams. This format allows viewers and participants to go on a collective journey with specific topics that relate to design investigation. In collaborating with artists and community members our design team can engage in an ongoing dialog that continues to inform design decisions and values.**

# **LECTURES, WORKSHOPS, AND CULTURAL INVESTIGATIONS**

## **I. Lectures**

This semester's lectures will be in the form of panel discussions and presentations. This format allows for artists and community members to convey information about topics and organizations involved in the West Bottoms Reborn design investigation and programming.

## **II. Workshops**

This semester's workshops will be collective experiences with the possibility of a mycoremediation workshop held during November Projected Event- Peter McCoy's mycoremediation consultation.

## **III. Cultural Investigations**

Cultural Investigations will be held second semester and be included in the Phase II Outline.

## **IV. Map-making Exercises**

I will make maps in response to the West Bottoms Reborn Project. Others may be invited to join or collaborate.

# WALKING TOURS



The intent of the walking tours is to have the West Bottoms Reborn team engage with a process of design investigation in a visceral way. Often we get glued to our desks or stuck in the groove of office life. This can sometimes disassociate us from the physical world and narrow our judgements. By remaining in a consistent engagement with community and place the team will attempt to maintain a dialog and exercise that continues to provide qualitative data as the project transforms and takes shape.

## PLANET

First semester walking tours run September 2017-December 2017. This series will be orientated around topics of sustainability and relationship to the planet

## OTHER

Second semester walking tours run January 2018-May 2018. This series will be oriented around topics in cultural histories and relationship to other.



Walking tours will be in service to all, deliverables such as design investigation, data collection, activation of the space, neighborhood revitalization, increase cultural vitality, provide educational and recreational activities, bolster and catalyze the arts, strategize for community place keeping, exploration of for future programming, capture the livelihood of the place, advocate for art-based approach to design for public spaces, provide feedback, generate community participation, recognize and celebrate the idiosyncratic qualities of the Historic West Bottoms.



## **West Bottoms Reborn Walking Tour Calendar**

Sept . 20 - Turkey Creek Part I - Tim Amundson

Sept . 23 - Turkey Creek Part II : Diversion Tunnel - Tim Amundson

Sept. 30 - Historic and Potential Bottomland Habitat - Amanda Gehin and Steve Van Rhien

Oct. 7 - Heathy Rivers Partnership River Clean-up

Oct. 16 - Plants, Place, Planet : Workshop - Aubrey Street Krug , The Land Institute

Oct. 21- Blind Folded Sound Tour - Carmen Moreno and Amos Leager

Oct. 27 - Sound Tour - Paul Rudy and UMKC Conservatory

Nov. ?? - PROJECTED JEFF STIEN Pannel Discussion

Nov. 12 - Silent Walking Club - Charlie Mylie and Silent Walkers

Nov. ?? - PROJECTED PETER MCCOY Mycoremediation Consultation

Dec. 2 - Sound Tour , Karen McCoy

Dec. ?? - Sound Tour , Jim and Annie Woodfill

## BUDGET FOR WALKING TOURS 2017

Sept . 20 - \$50 Artist Stipend

Sept . 23 - \$50 Artist Stipend + \$500 Boat , Insurance, Life Vests, Etc.

Sept. 30 - \$50 Artist Stipend

Oct. 7 - \$0 (volunteer activity)

Oct. 16 - Donation

Oct. 21- \$50 Artist Stipend

Oct. 27 - Donation

Nov. ?? - \$0 + KCDC Lecture Costs

Nov. 12 - \$50

Nov. ?? - PROJECTED Cost of Consultation

Dec. 2 - \$50 Artist Stipend

Dec. ?? - \$50 Artist Stipend

## **BUDGET FOR WALKING TOURS 2017**

**Total Artist Stipends .....\$350**

**Donations .....\$200**

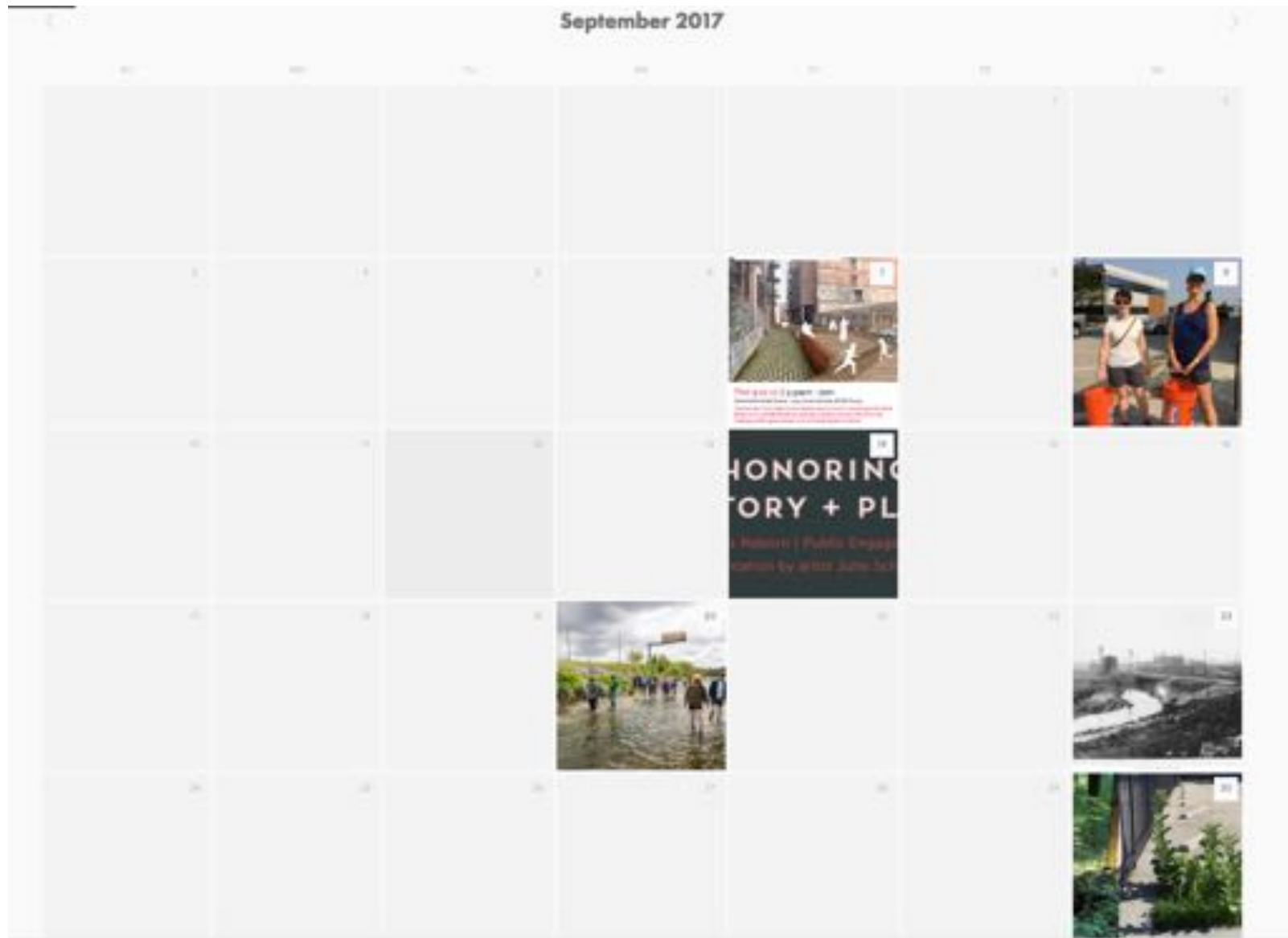
**Boat Rental .....\$500**

**Total   \$1050**

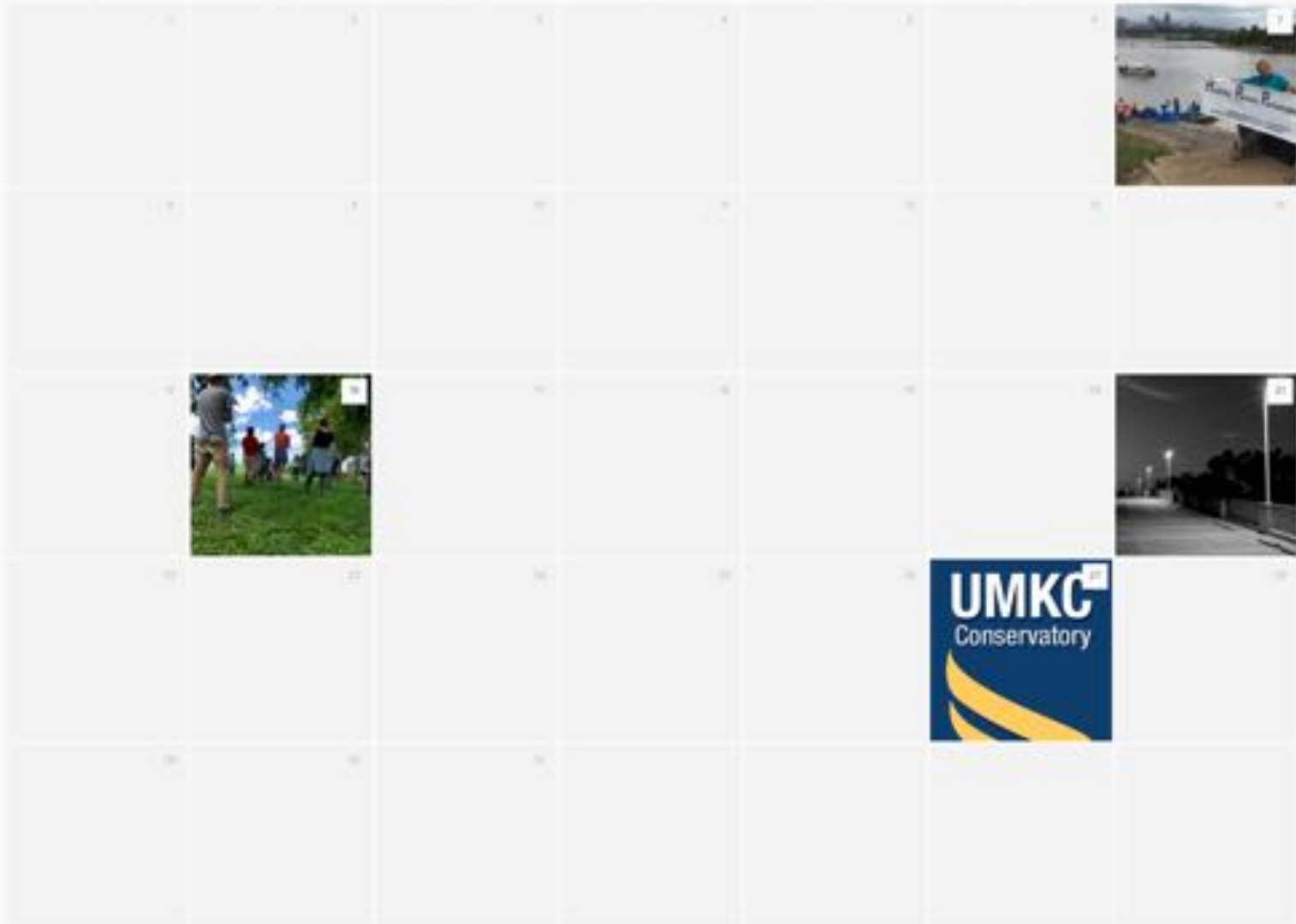
**Needs :**

**\$60-\$100 Portable Microphone and Amp**

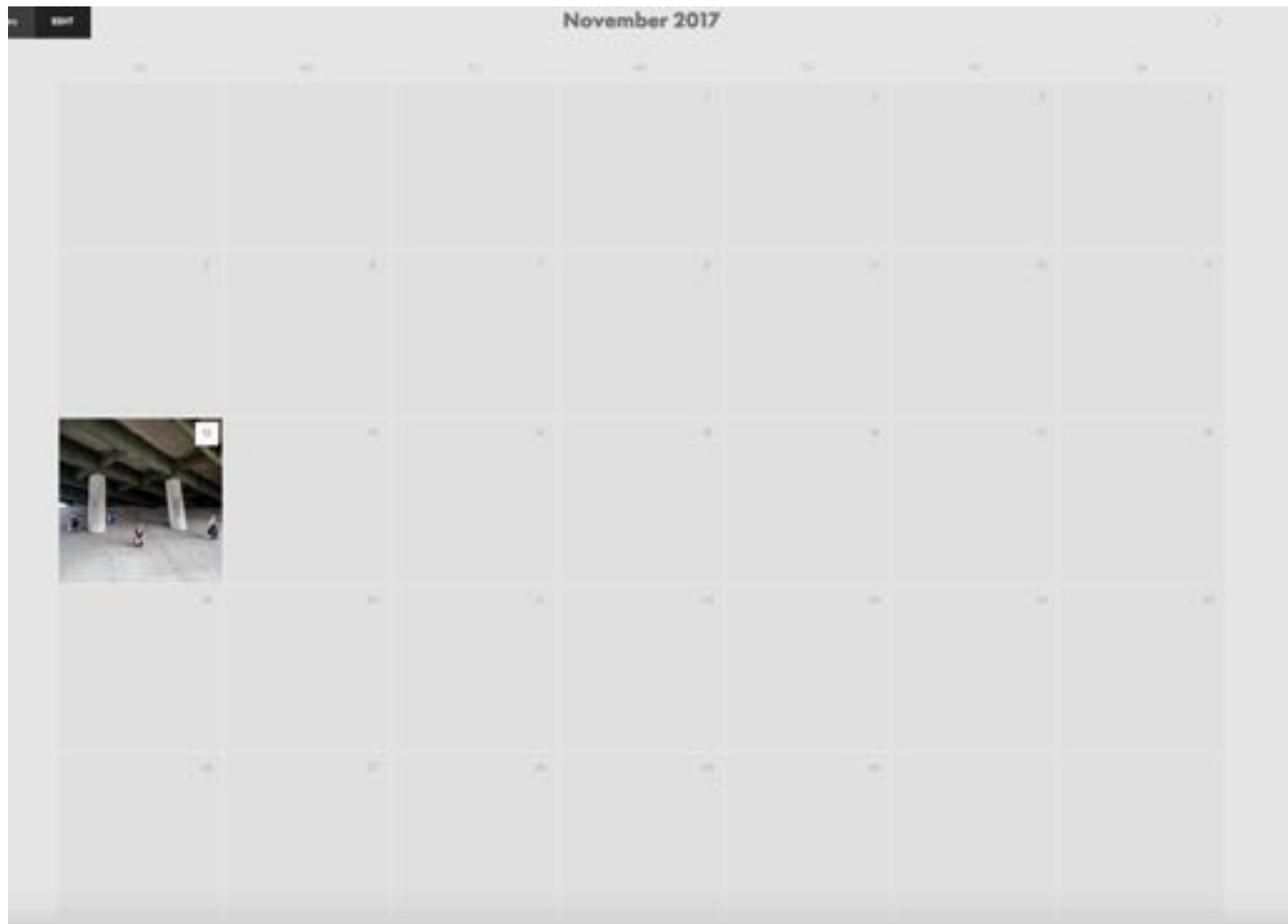
# CALENDAR 2017



October 2017









# **SOCIAL PLATFORMS**

## **WEBSITE**



**The purpose for a project website is to create a social platform for the project as a whole. The website allows for information about the project to be accessible to communities within and outside the KC Metro region. This format allows for us to be socially accountable to our larger community network as well as provide vital information and resources. The West Bottoms Reborn site also provides a excellent platform for documentation of visual imagery and developmental progress.**

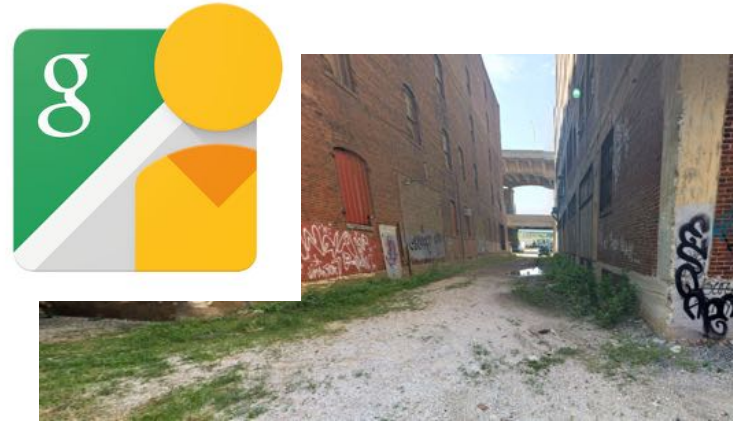
# TECHNOLOGY

Along with being active through Arts and Culture, I have dedicated myself to a collaborative role within the realm of technology. I feel it is important to use multiple venues and tools for communication. The technologies I will be working with are Drones, 360s - google street view, Digital Imaging, Animation, After Effects, and VR Applications.



### **Drones**

**I am interested in using drone footage as a way to visually map and understand the West Bottoms. I also feel it is necessary to present documentation of the area in a format that is accessible and relatable to community members and residents. This footage also makes the space knowable for communities and agencies that resident outside the KC Metro Area.**



### **360 Google St. Views**

**Like the aerial footage the 360 street views make it possible to visual see and understand the circumstances or conditions of the urban space. The 360 street view adds an additional layer to this understanding by representing location in google maps. The pin gives you the exact site location making it ease to find and exemplify when referencing the space with new participants and/or audiences.**





### **VR Application**

**I am interested in experimenting with VR applications as a way to display work, sites, video, and art. This is simply just a fun exercise, and exploration of new tools for discovering and exploring space. My hope is to have at least one community event in which the participants are engaged in a viewing station of that includes VR viewing.**



### **After Effects, Animation, Digital Imaging**

**I am also interested in experimenting with animation and digital imaging as a way to represent some of the conceptual frameworks I am interested in. For example, the animated linguistic concepts as seen above in West Bottoms Reborn Vision Study I. Also a great format for discovering new ways to understand space and object.**

# OUTCOMES



In the image above we see hands that hold soil. For me, this represents the understanding and knowledge of the land. In considering climate change and world population, I believe people who hold the knowledge of the earth will become a foundation to the greater understanding of sustainability in the future.



Above is a Osage Friendship Blanket, made of silk ribbon and wool. The friendship blankets were given to friends and supporters during ceremonies, and continue to be used to this day. As we face political conflict and racism , it becomes necessary to speak out against ignorance, compliancy, and lies. Unrealistic world views can only result in destruction, and threaten our survival as a species.

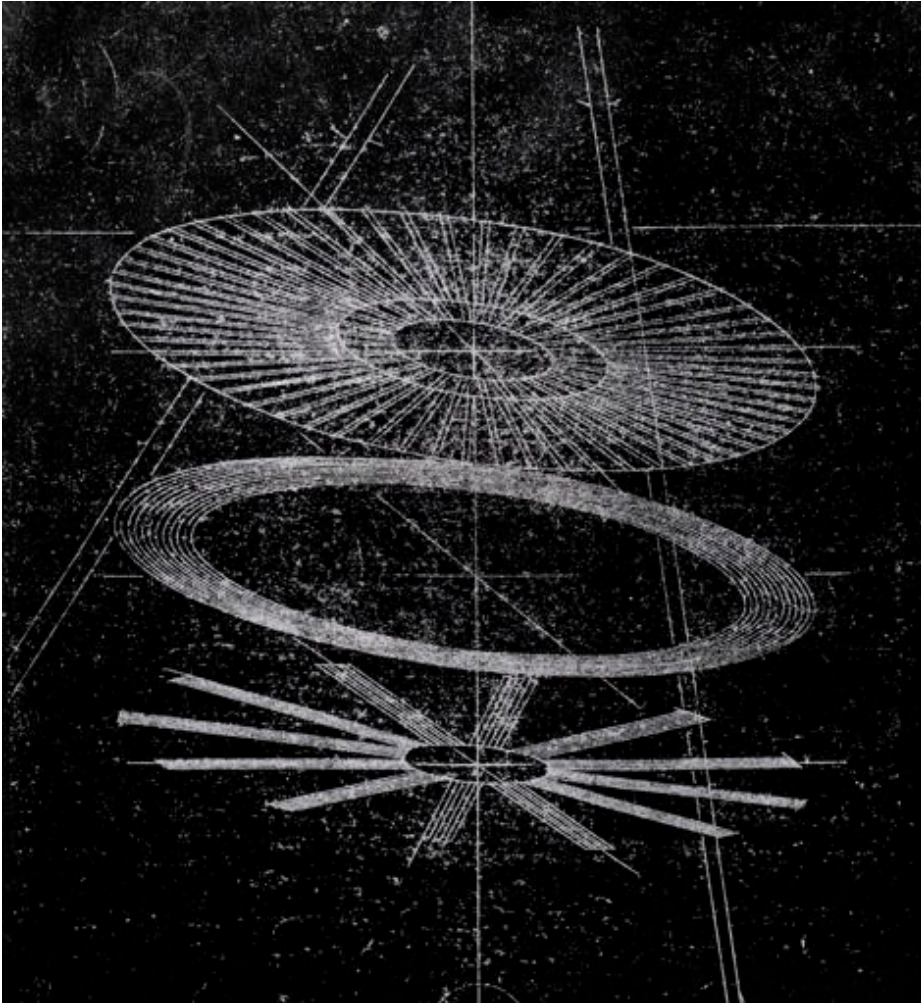
## **Interconnectivity in the Ecosphere**

How will it end? ..... I'm not really sure, this season on planet earth is a toss up. Its an "all in" and our actions will be crucial to the story. I believe at this time it is necessary to put forth what we have to offer as individuals and communities. For me, one of the most valuable things our community has to offer is a knowledge of the land. These wisdoms will play a crucial role in the future, and it is our responsibility to be accountable for what we know. If we wish to address the problematic scenarios at hand we will have to "stand up" and put forth our designated efforts in resistance to absolutist power structures. In acknowledging our place in the world we can reshape the architecture of our social structures.

## VISION STUDY FOR THE CENTRAL INDUSTRIAL DISTRICT



## CONCEPT FORM



### I. Spiral

The first concept form is a spiral. This image is representative of what moves inward. The forces of the nature push out , but also pull in -revealing the power of gravity, magnetism, and a unknowable center.

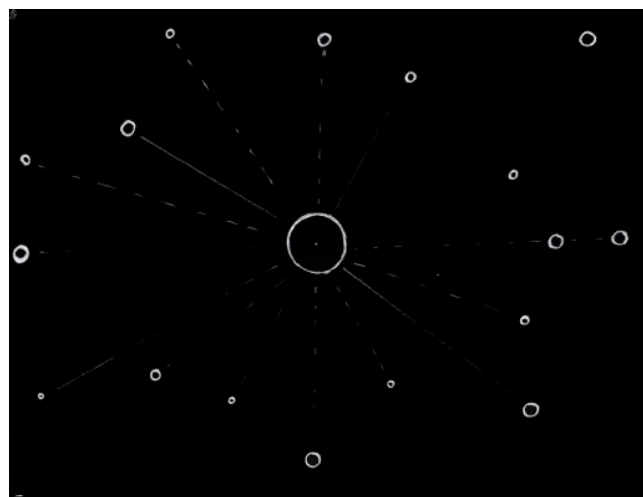
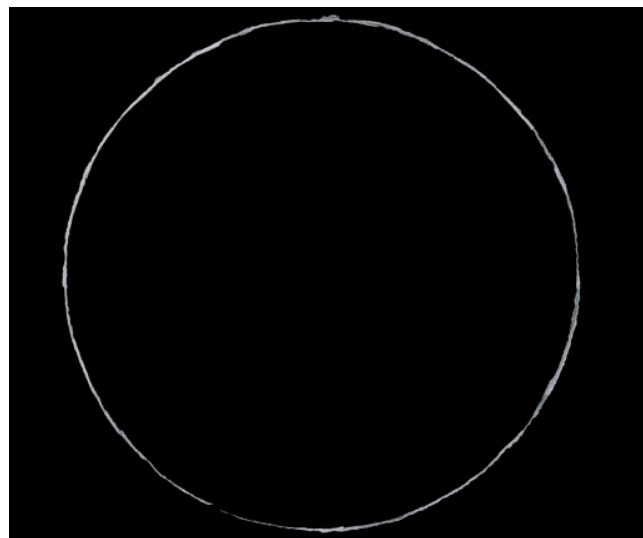
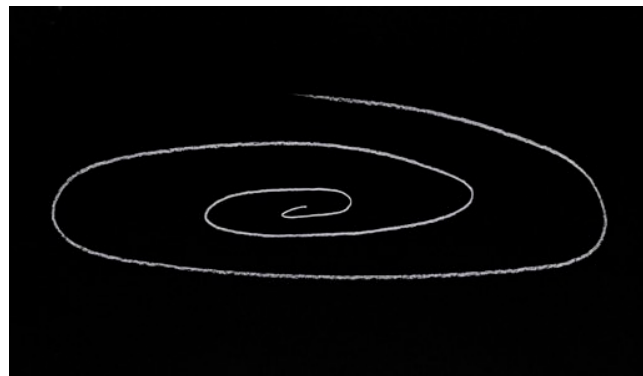
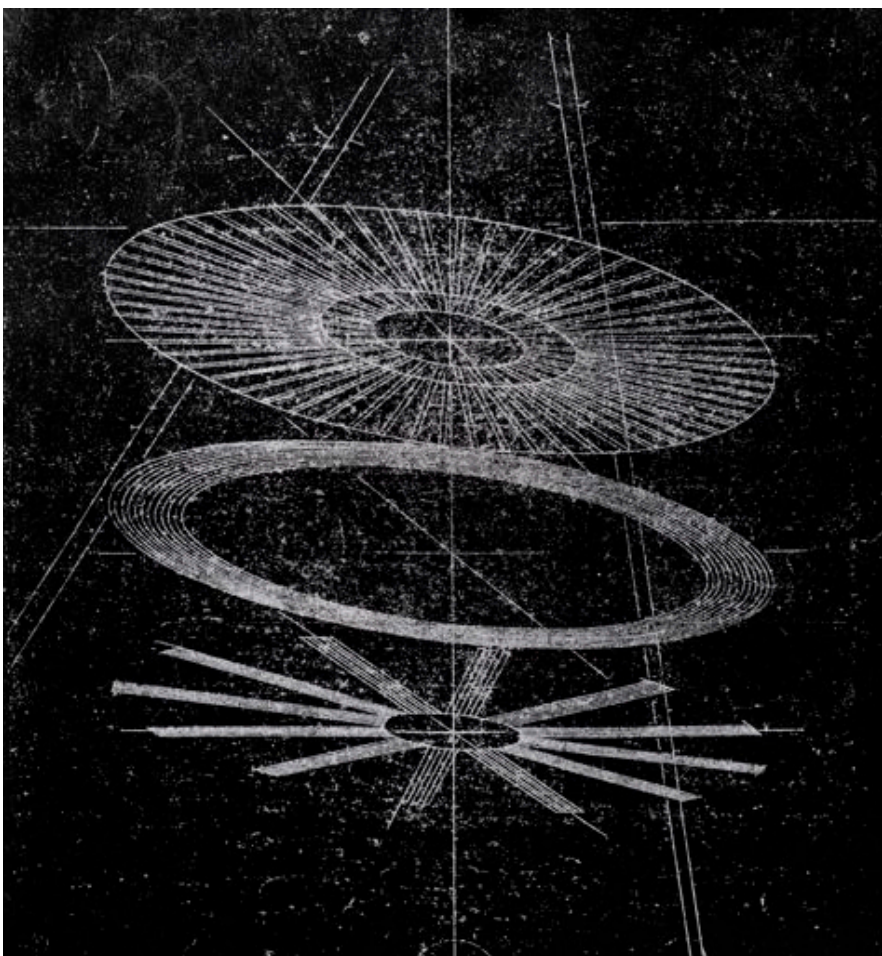
### II. Circle

The Circle concept form is representative of the life-death cycles. It also is a symbol of interconnectivity and is the shape of the planet. "The Circle of Life" is the premise here, connecting to mysterious forces of nature that hold us together shaping our world into a sphere.

### III. Orbit

The Orbit concept form is representative of the choreography of nature - shifting , transforming, and orbiting systems. These movements can often reveal intricate processes as well as unrealized interconnected relationships with in the universe.







## CONCEPT - WATER - IDENTITY



The purpose of this design study is to investigate identity as a core component congruent to the West Bottoms Reborn Our Town Grant - *“West Bottoms Reborn seeks to integrate arts and cultural production a place-keeping strategy that reinforces the particular local identity of the WB while addressing critical infrastructure needs and elevating the quality of the urban space.”*

The concept behind this is that the water, as an element, would play a new role in Kansas City’s identity as the ‘*City of Fountains*’. Instead of water being used at an ornamental material splashing against a woman’s naked body, this fountain would be designed to embrace water as an important element and source of life. As well as highlighting our relationship to water quality and a sustainable future.

















